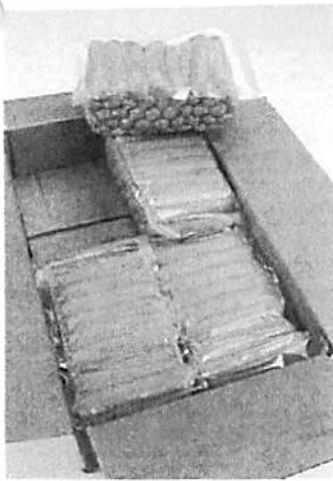




612869

TURKEY FRANK 8/LB 5''' CN



**PACKAGING**

<b>Case UPC Code:</b>	10042222612897	<b>Servings Per Case:</b>	160
<b>Units Per Case:</b>	4	<b>Unit Size:</b>	5 LB
<b>Kosher:</b>	NO	<b>Pallet Tie:</b>	8
<b>Shelf Life:</b>	365 DAYS FROZEN FROM PACK DATE	<b>Pallet High:</b>	10
<b>Case Gross Weight (imperial):</b>	20.76 LB	<b>Case Net Weight (imperial):</b>	20.00 LB
<b>Case Width (imperial):</b>	11.50 IN	<b>Case Length (imperial):</b>	20.30 IN
<b>Case Height (imperial):</b>	4.90 IN	<b>Case Cube (feet):</b>	0.662 FT

**NUTRITION**

**Nutrition Facts**

Serving Size: 2 OZ (56g)

Amount Per Serving

**Calories** 130

Calories from Fat 100 178.57

	Per Serving	% Daily Value*
<b>Total Fat</b>	11 g	16%
Saturated Fat	3 g	14%
Trans Fat	0 g	
<b>Cholesterol</b>	45 mg	15%
<b>Sodium</b>	700 mg	29%
<b>Carbohydrate</b>	1 g	0%
Dietary Fiber	0 g	0%
Sugars	0 g	
<b>Protein</b>	7 g	

	Per Serving		Per Serving
Vitamin A	0 %	Vitamin C	2 %
Calcium	6 %	Iron	6 %
Ash	0 %	Biotin	0 %
Copper	0 %	Folate	0 %
Iodine	0 %	Magnesium	0 %
Moisture	0 %	Niacin	0 %
Panto Acid	0 %	Phosphorous	0 %
Riboflavin	0 %	Vitamin B6	0 %
Vitamin B12	0 %	Vitamin D	0 %
Vitamin E	0 %	Zinc	0 %

\*Percent Daily Values are based on a 2,000 calorie diet. Your daily values may be higher or lower depending on your calorie needs.

	Calories:	2,000	2,500
Total Fat	Less than	65g	80g
Saturated Fat	Less than	20g	25g
Cholesterol	Less than	300mg	300mg
Sodium	Less than	2,400mg	2,400mg
Carbohydrate		300g	375g
Dietary Fiber		25g	30g

Calories per gram:

Fat 9      Carbohydrate 4      Protein 4

**INGREDIENTS**

MECHANICALLY SEPARATED TURKEY, WATER, SALT, CONTAINS 2% OR LESS SEASONING (CORN SYRUP SOLIDS, DEXTROSE, SUGAR, PAPRIKA, SODIUM ERYTHORBATE, SPICE EXTRACTIVES), SODIUM PHOSPHATE, NATURAL SMOKE FLAVORING, SODIUM NITRITE.